

Approvals

***Wolf Safety Lamp Company***

## OPERATION AND MAINTENANCE INSTRUCTIONS



MMD/5.19  
DF528  
Part No. A-93 issue 8



**Warning:**

- Pressurised enclosures, inspect lamp in accordance with these instructions before operation. Stand clear when in use.
- Dirt or moisture from unfiltered air will deposit on the inside of the glass, reducing light output.
- All maintenance to be carried out in the safe area.
- Before dismantling the lamp shut off air supply and wait two minutes.
- Do not cover or obscure light transmitting parts.

---

### Inspection and Maintenance

ATEX Turbolites are available with **Aluminium – A**, or **Brass – B** construction. Do not mix cast components. A damaged alarm should be withdrawn and repaired in accordance with these instructions, by trained/qualified persons:

- Alarms should be inspected, cleaned and tested every three months for regular use, otherwise after every 1000 hours of use. Refer to IEC 60079-17 for guidance on inspection and maintenance.
- The use and/or improper fitting of spare parts will invalidate product certification and the manufacturer's guarantee and responsibility may cause an unsafe condition. If in doubt contact the Company.

### Head Removal and Bulb/Bulb Head Replacement (Fig. 1 & 1a)

To gain access to the bulb, release the lock screw (A-7d), and unscrew the reflector head/locking dome from the generator (A-226/A-223).

The 24V 250watt tungsten halogen bi pin capsule bulb (A-129/A-159, type GP6-35) should be handled with care, the clips and pinch are fragile. When the bulb goes the alarm should be switched off immediately and removed from service for bulb replacement. A glass tube (A-90B) with bayonet clip is fitted over the bulb to improve bulb life and reduce contamination. To remove, lift one spring clip and rotate the tube clockwise. The tubulohat can be removed by unscrewing the lock nuts (A-872) holding the tubulohat terminals (fig. 1a). On inspection check these nuts are secure to ensure a reliable electrical contact and pressure seal on the insulating bush (A-82).

When re-assembling the ATEX Turbulite, ensure the head is screwed down far enough over the 'O' ring (A-77) or grooved rubber washer (A-158) on the generator to seal the pressurised enclosure. Then lock the enclosure with the lock screw (A-7d).

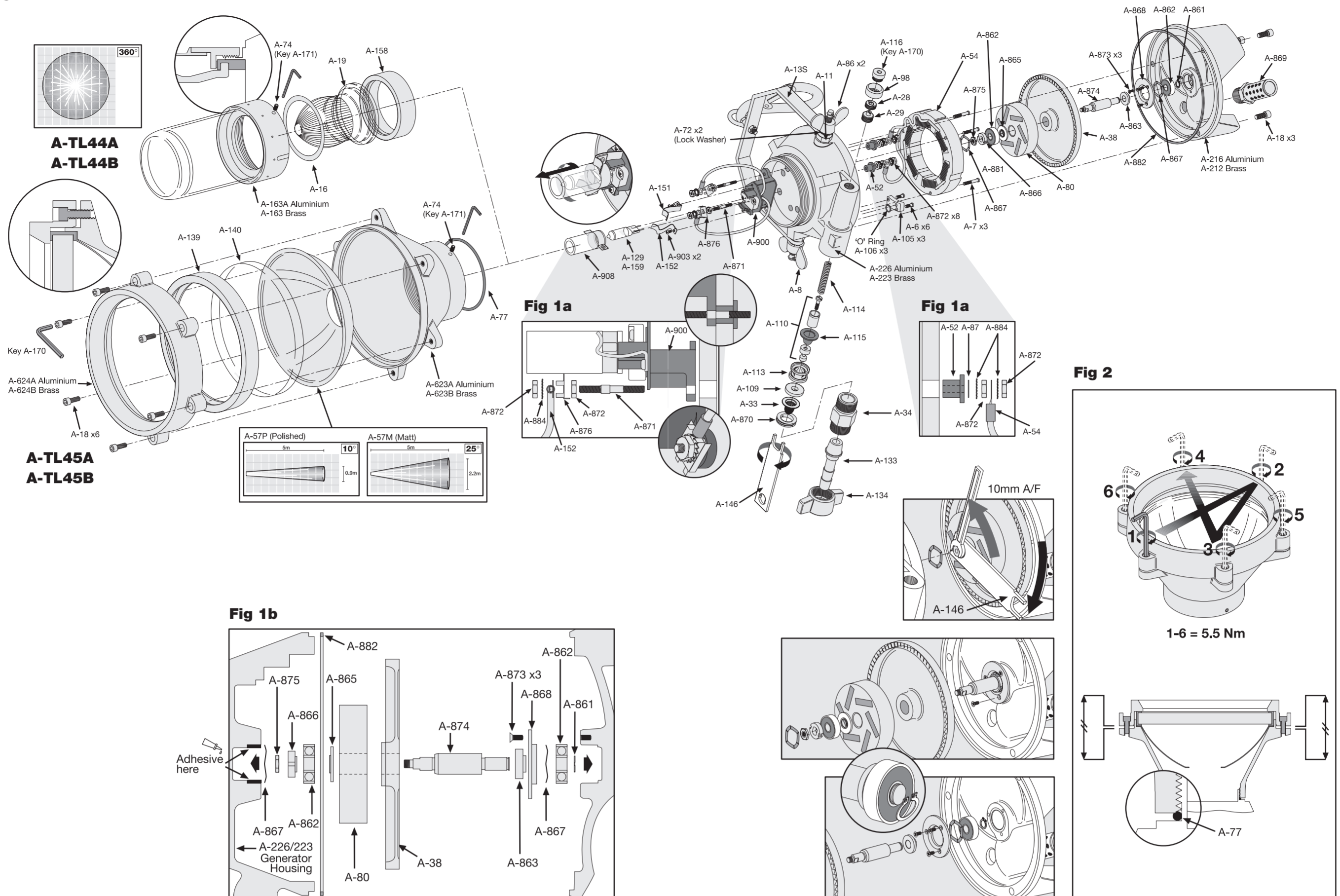
### Removal and replacement of the ball glass, A-1744/B (Fig. 1, Fig. 1a)

See head removal. Inspect ball glass (A-19), do not use if damaged.

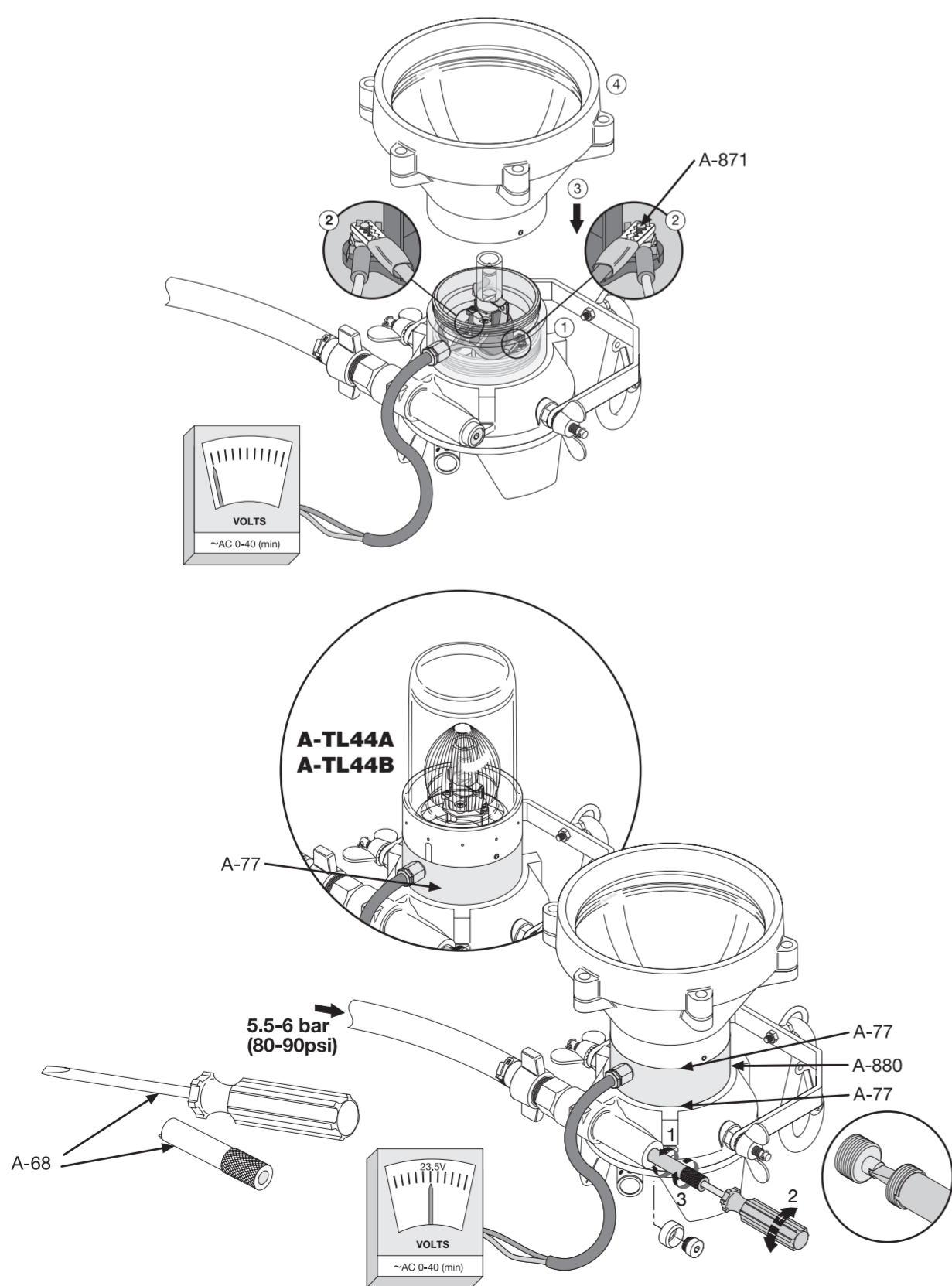
### Removal and replacement of the glass disc, A-1745A/B (Fig. 1 & 2)

Remove 6 x fastening screws (A-18) retaining the lens ring to gain access to the glass disc (A-14d) for cleaning or replacement. Inspect the glass disc, do not use if damaged. The fastening screws are of a special high tensile stainless steel.

**Fig 1**



**Fig 3**



**Fig 4**

