

LED ATEX Tank Lighting Kits

Wolf

WWW.WOLFSAFETY.COM



Wolf

Saxon Rd Works, Sheffield, S8 0YA, UK
T: +44 (0) 114 225 1051 | F: +44 (0) 114 255 7988
E: info@wolfsafety.com | www.wolfsafety.com



KIT COMPONENTS

THE LINKEX™ TANK LIGHTING KITS, ALL ATEX CERTIFIED, PROVIDE LOW VOLTAGE TEMPORARY LIGHTING SOLUTIONS FOR ZONES 1 AND 2 (GAS) AND 21 AND 22 (DUST) HAZARDOUS AREAS WHERE POTENTIALLY EXPLOSIVE GASES, VAPOURS, MISTS AND DUSTS MAY BE PRESENT IN A CONFINED SPACE.

The kits allow for a flexible setup of high quality task and ambient lighting to suit all working conditions in tanks and vessels and offers your workers a high level of safety through a simple configuration of:

- LinkEx™ LED Temporary Luminaires
- LinkEx™ LED Temporary Emergency Luminaires
- LinkEx™ WF-300XL & WF-250XL LED Floodlites
- Handheld Leadlamps
- ATEX Transformer, 230V or 110V to 24V
- Range of cables, plugs and socket types and power distribution systems
- Protective, fixing and mounting accessories

Features & Benefits

- ATEX and IECEx Certified
- Approved for explosive Gas and Dust atmospheres
- Powers up to 8 LED Luminaires
- Emergency luminaires with backup battery supply for extra safety
- Fitted with ATX plugs and sockets
- Low and easy maintenance
- Robust, durable and lightweight construction
- Quick and easy installation over a large area
- Low power consumption
- Wide range of fixing, mounting and protection accessories available



All Wolf Safety lighting products featuring in Tank Lighting Kits are fitted with SOVI™.

SOVI™ - the unique Safe Optimal Voltage Indicator system clearly alerts the user if lights are running outside the certified and optimal operating voltage ranges, maximising both safety and performance. In the unlikely event that the light is operating at a voltage above the maximum certified limit, the beam will pulse bright to dim, clearly warning the operator to take the appropriate action to ensure that work can continue safely in the Hazardous Area.

LINKEX™ LED TEMPORARY LUMINAIRE

THE LINKEX™ LED TEMPORARY LUMINAIRE IS A HIGH POWERED LED LEADLAMP FOR USE IN SHORT-TERM LIGHTING INSTALLATIONS AND MAINTENANCE TASKS AND IS CE MARKED TO THE ATEX DIRECTIVE AND IECEx CERTIFIED FOR SAFE USE IN ZONES 1 AND 2 POTENTIALLY EXPLOSIVE GAS AND DUST ATMOSPHERES, WHERE A T3/T4 (MODEL DEPENDENT) TEMPERATURE CLASS PERMITS. EMERGENCY VERSION ALSO AVAILABLE.

Features & Benefits

- ATEX and IECEx certified for use in Zones 1 and 2 explosive gas and dust atmospheres
- T4 temperature class version available
- High power, low maintenance LED light source 'Fitted for Life'
- High and low input voltage versions available
- Available with ATEX plugs and sockets to link in series/chain
- Compact and robust design
- Low power consumption
- Emergency Function: if the power supply should fail, the light will switch automatically to battery power
- 3 hours battery duration (at reduced light output) to allow emergency evacuation



LINKEX™ LX-400 LUMINAIRE

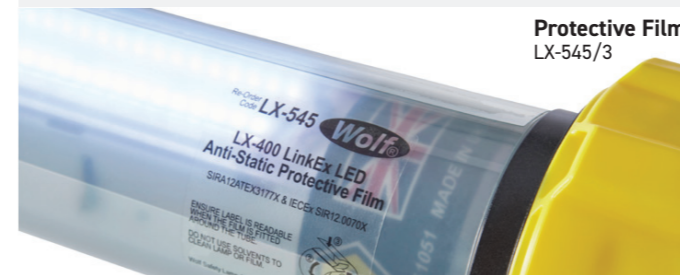
Ref	LX-400/LX-400E
	II 2 GD Ex eb mb op is IIC T4 Gb (-20°C to +55°C) Ex tb op is IIIC T135°C Db IP67
	Sira 12ATEX3177X, IECEx SIR 12.0070X
G	Zones 1 & 2, Gas Groups IIA, IIB, IIC
D	Zones 21 & 22
	3.2kg without cable
	18-50V AC/DC (LV) Emergency (LV)18-55VAC/DC 90-264V AC (HV)
	ø128mm x 706mm
	4,000lm (up to 1,500lm on emergency battery)
	IP66 (Linkable) or IP67 (Non-Linkable)



Magnet LX-680



Tripod (Medium Duty) LL-699



Protective Film LX-545/3



Anti-Static Protection Cover LX-621/5

KIT COMPONENTS

LINKEX™ WF-250XL ATEX FLOODLITE

LinkEx LED

THE LINKEX™ WF-250XL LED FLOODLITE IS DESIGNED TO GIVE THE OPTIMUM LEVEL OF LIGHT FOR WORKING IN SMALLER, HAZARDOUS AREA CONFINED SPACES. IDEAL FOR 24 VOLT APPLICATIONS WITH A LIMITED POWER SUPPLY, UP TO 8 FLOOD-LIGHTS CAN BE USED IN DIFFERENT STRINGS FROM JUST ONE WOLF TRANSFORMER. FITTED WITH WOLF'S UNIQUE SOVI™ SYSTEM TO ENSURE SAFE OPERATION, THE FLOODLITE IS CERTIFIED FOR SAFE USE IN ZONE 1, T4, IIC, -40°C TO +55°C AMBIENT, HAZARDOUS GAS, VAPOUR, MIST OR DUST ENVIRONMENTS.

Features & Benefits

- ATEX and IECEx certified for use in Zones 1 and 2 explosive gas and dust atmospheres
- T4 temperature class
- Ideal light output for smaller confined spaces - minimal glare and shadows
- Highly reliable LEDs designed and tested to give 100,000+ hours life
- Effective work area illumination when using a limited power source
- Low power consumption, reduced operating costs: HV 31 watts & LV 28 watts
- Small, lightweight and compact - easy to carry
- Tough, reliable, proven materials for long life guarantee



LINKEX™ WF-250XL ATEX FLOODLITE

Ref	WF-250XL
	II 2 G D Ex eb mb op is IIC T4 Gb Ex tb op is IIIC T118°C Db CML 18ATEX3372X, IECEx CML 18.0198X
G	Zones 1 & 2, Gas Groups IIA, IIB, IIC
D	Zones 21 and 22, Dust Groups IIIA, IIIB and IIIC
	5.4kg without cable
	18-50V AC/DC (LV) 90-264V AC (HV)
	280mm x 300mm x 380mm
	4,334lm (HV) & 4,224lm (LV)
	IP66/67



Stainless Steel Mesh Cover
WF-478



Magnet kit
WF-545



Scaffold kit
WF-699

*magnet and scaffold fixing kits can be used with WF-250XL & WF-300XL Floodlites

LINKEX™ WF-300XL ATEX FLOODLITE

LinkEx LED

THE LINKEX™ WF-300[®]XL LED FLOODLITE IS A HIGH PERFORMANCE, ROBUST, LIGHTWEIGHT AND PORTABLE FLOODLITE FOR USE IN POTENTIALLY EXPLOSIVE ATMOSPHERES. IT DELIVERS AN OUTSTANDING LEVEL OF WHITE LIGHT AND IS FULLY COMPLIANT WITH THE LATEST ATX AND IECEx STANDARDS, INCLUDING OP IS - OPTICAL INTRINSIC SAFETY. FITTED WITH WOLF'S UNIQUE SOVI SYSTEM TO ENSURE SAFE OPERATION, THE FLOODLITE IS CERTIFIED FOR SAFE USE IN ZONE 1, T4, IIC, -40°C TO +55°C AMBIENT, HAZARDOUS GAS, VAPOUR, MIST OR DUST ENVIRONMENTS.

Features & Benefits

- ATEX and IECEx certified for use in Zones 1 and 2 explosive gas and dust atmospheres including OP IS optical intrinsic safety
- T4 temperature class
- Dual independent LED system powered by independent drivers giving failsafe product reliability
- Thermal management - LED life assured by efficient heat dissipation through built in fins and electronic control
- Safe to 0 volts - both LV and HV units are safe down to 0 volts
- Complementary product to existing range of LinkEx™ LED Temporary Luminaire area lighting systems



LINKEX™ WF-300[®]XL ATEX FLOODLITE

Ref	WF-300 [®] XL
	II 2 G D Ex eb mb op is IIC T4 Gb Ex tb op is IIIC T118°C Db SCML 18ATEX3372X, IECEx CML 18.0198X
G	Zones 1 & 2, Gas Groups IIA, IIB, IIC
D	Zones 21 and 22, Dust Groups IIIA, IIIB and IIIC
	7.3kg without cable
	18-50V AC/DC (LV) 90-264V AC (HV)
	280mm x 370mm X 480mm
	8,668lm (HV) & 8,447lm (LV)
	IP66/67



Anti-Static Lens Guard
WF-421/3



Stainless Steel Mesh Cover
WF-480



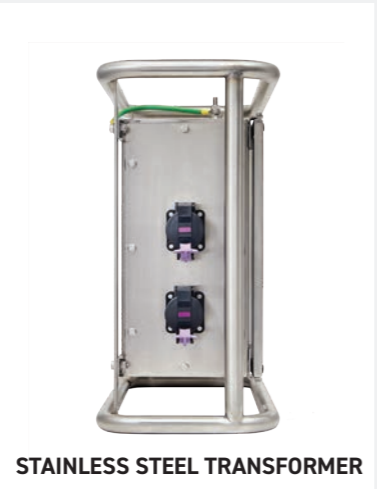
Anti-Static Protection Cover
WF-462

KIT COMPONENTS

TRANSFORMERS & POWER DISTRIBUTION

WOLF SAFETY TRANSFORMERS ARE CE MARKED TO THE ATEX DIRECTIVE AND IECEX CERTIFIED FOR USE IN POTENTIALLY EXPLOSIVE ENVIRONMENTS. ALL WOLF TRANSFORMERS ARE CERTIFIED FOR USE IN GAS ZONES 1 & 2 IN GAS GROUPS IIA, IIB & IIC; AND ARE ALSO HAVE DUST CERTIFICATION FOR ZONES 21 & 22, IN DUST GROUPS IIIA, IIIB AND IIIC. AVAILABLE IN EITHER A GRP (GLASS REINFORCED POLYESTER) OR STAINLESS STEEL, ALL OUR TRANSFORMERS ARE SEALED TO IP66 ENABLING USE IN WET AND DUSTY CONDITIONS, WITH A STAINLESS STEEL PROTECTIVE SKID MAKING THE UNITS EASIER TO HANDLE AND INSTALL IN THE HARSHTEST OF ENVIRONMENTS.

Ref	WOLF TRANSFORMERS
	ATEX & IECEX Certified T3 and T4 Models available
G	Zones 1 & 2, Gas Groups IIA, IIB, IIC
D	Zones 21 and 22, Dust Groups IIIA, IIIB and IIIC
	21-28kg Model Dependent
	4 outputs, ATX 24V 2P + E as standard
	GRP - 504 x 465 x 285 mm (L x W x H) SS - 512 x 562 x 260 mm (L x W x H)
	IP66



STAINLESS STEEL TRANSFORMER



GRP TRANSFORMER

Features & Benefits

- Robust and durable construction
- Easy to manoeuvre and set up with protective steel skid which distances the body of the product from wet or dirty conditions
- Supplied with 15m SY cable and ATX plug, CEAG, STAHL and Marechal plug options available
- T4 temperature class with upper ambient operating temperature of +55°C, T3 Models also available
- Fitted with 4 x ATX socket outlets
- 110V versions available with CTE (Centre Tap Earth) option
- Fully flexible to enable different configurations to be built to your specific hazardous area requirement

PLUGS

ALL WOLF TANK KIT COMPONENTS COME WITH AN ATX PLUG AS STANDARD, ALTHOUGH CAN BE FITTED WITH CEAG, STAHL & MARECHAL PLUGS ON REQUEST.

POWER DISTRIBUTION SYSTEMS & CABLING

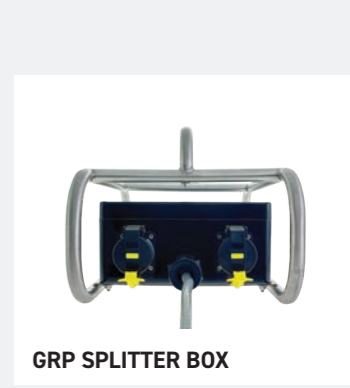
TANK LIGHTING KITS ARE ALSO COMPATIBLE WITH A RANGE OF ADDITIONAL ITEMS TO INCREASE THE FLEXIBILITY OF THE LIGHTING SOLUTION. CABLE REELS, EXTENSIONS AND SPLITTER BOXES ARE AVAILABLE, AS WELL AS MULTIPLE CABLING AND SOCKET OPTIONS TO BEST SUIT THE WORK TASK AT HAND.



ATEX CABLE REEL



STAINLESS STEEL SPLITTER BOX



GRP SPLITTER BOX



ATEX EXTENSION CABLE

CABLING

WOLF TANK KITS AND TRANSFORMER UNITS COME FITTED WITH SY CABLE AS STANDARD, ALTHOUGH SHIPS BRADED CABLING AND H07RN-F CABLING ARE AVAILABLE UPON REQUEST.



SY Cable



Ships Braded Cable



H07RN-F Cable

Product Reference	Diagram	Product Images	Transformer Voltage & Model	VA	Ambient Temp. (°C)	Kit Code
4 x LX-400 180°	<p>SUPPLY 110v / 230v</p> <p>Transformer Input Cable 15m</p> <p>Lamp Input Cable 20m SY 2.5mm²</p> <p>24V Output</p>		GRP 110V (LL-114/T4)	250	-20°C to +55°C	LX-175/T4
			SS-110V (LL-133/T4)	250		LX-185/T4
			GRP 230V (LL-214/T4)	250		LX-275/T4
			SS 230V (LL-233/T4)	250		LX-285/T4
3 x LX-400 180°, 1 x LX-400E	<p>SUPPLY 110v / 230v</p> <p>Transformer Input Cable 15m</p> <p>Lamp Input Cable 20m SY 2.5mm²</p> <p>24V Output</p>		GRP 110V (LL-114/T4)	250	-20°C to +55°C	LX-146/T4
			SS-110V (LL-133/T4)	250		LX-166/T4
			GRP 230V (LL-214/T4)	250		LX-246/T4
			SS 230V (LL-233/T4)	250		LX-266/T4
4 x WF-250XL	<p>SUPPLY 110v / 230v</p> <p>Transformer Input Cable 15m</p> <p>Lamp Input Cable 20m SY 2.5mm²</p> <p>24V Output</p>		GRP 110V (LL-114/T4)	250	-20°C to +55°C	LX-139/T4
			SS-110V (LL-133/T4)	250		LX-159/T4
			GRP 230V (LL-214/T4)	250		LX-239/T4
			SS 230V (LL-233/T4)	250		LX-259/T4
4 x WF-300XL	<p>SUPPLY 110v / 230v</p> <p>Transformer Input Cable 15m</p> <p>Lamp Input Cable 20m SY 2.5mm²</p> <p>24V Output</p>		GRP 110V (LL-114/T3)	400	-20°C to +35°C	LL-135/T3
			SS-110V (LL-133/T3)	400		LL-155/T3
			GRP 230V (LL-214/T3)	400		LL-235/T3
			SS 230V (LL-233/T3)	400		LL-255/T3
2 x LX-400 180°, 2 x WF-300XL	<p>SUPPLY 110v / 230v</p> <p>Transformer Input Cable 15m</p> <p>Lamp Input Cable 20m SY 2.5mm²</p> <p>24V Output</p>		GRP 110V (LL-114/T3)	400	-20°C to +35°C	LX-137/T3
			SS-110V (LL-133/T3)	400		LX-157/T3
			GRP 230V (LL-214/T3)	400		LX-237/T3
			SS 230V (LL-233/T3)	400		LX-257/T3
8 x LX-400 180° (2 x chains of 4 linked lights)	<p>SUPPLY 110v / 230v</p> <p>Transformer Input Cable 15m</p> <p>24V Output</p> <p>Lamp Input Cable 5m</p>		GRP 110V (LL-114/T3)	400	-20°C to +35°C	LX-147/T3
			SS-110V (LL-133/T3)	400		LX-167/T3
			GRP 230V (LL-214/T3)	400		LX-247/T3
			SS 230V (LL-233/T3)	400		LX-267/T3

Accessories include hanging straps and protective film (Luminaires) and anti-static paint protection covers (Luminaires and Floodlights)

In addition to these standard configurations, we can offer bespoke LED tank kits based on your specific requirements in terms of light output needed suitable for your work environment, as well as offering accessories to maximise efficiency.

Emergency luminaires with built-in battery supply are also available with all possible configurations, providing 3 hours of light at a reduced level allowing safe evacuation of the hazardous area.

KIT SPARES & OTHER LIGHTING OPTIONS

WOLF SPARES

All products are designed to be user serviceable, backed up by technical advice and training on the operation and maintenance of products. A full spares service is offered for all internal and external fittings and accessories.

- Outer tubes
- Yellow end protectors / caps
- Trumpet glands
- Voltage drivers
- Replacement cable
- Tray assemblies
- Fixing kits and straps
- Replacement magnets
- Plugs and sockets
- ATEX certified protective films & bags

Other items available upon request



WOLF OTHER COMPLIMENTARY LIGHTING EQUIPMENT

ATEX WORKLITE

Rechargeable high output LED Floodlight



ATEX TURBOLITE

High-power compressed air safety lamp



HANDLAMPS

A range of rechargeable and primary cell powered handlamps



INSPECTION LEADLAMP

Versatile, handheld lightweight cable powered lamp



Wolf

Saxon Rd Works, Sheffield, S8 0YA, UK
T: +44 (0) 114 225 1051 | F: +44 (0) 114 255 7988
E: info@wolfsafety.com | www.wolfsafety.com



SL043 Issue 6
DF510