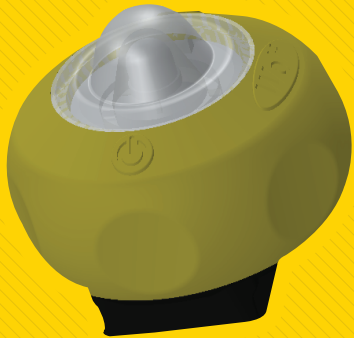


WOLF MARKERLITE



ML-605 ACCESSORY KIT

- Spring Loaded Gripper Clip
- Pipe Strap
- Magnet Mount

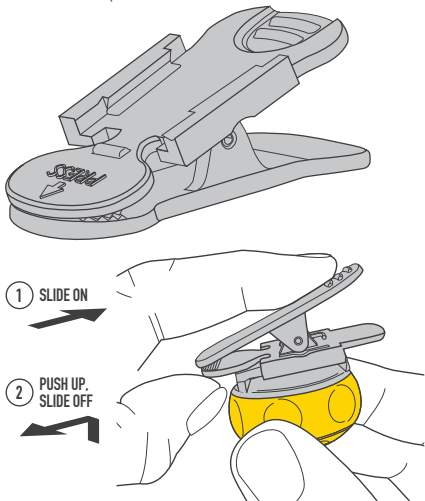


MARKERLITE ACCESSORY KIT INSTRUCTIONS

GRIPPER CLIP

REAR MOUNTED, SPRING LOADED GRIPPER CLIP

This Markerlite accessory can be used to clip the Markerlite to belts, straps and fixtures with a thickness up to 14mm.

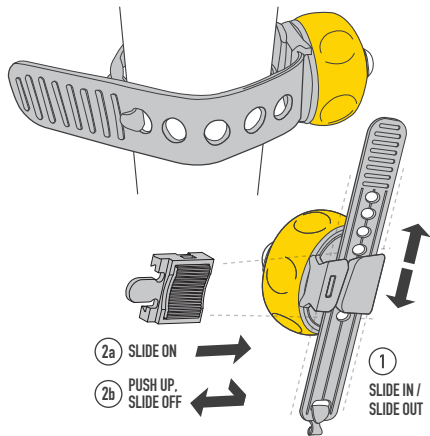


PIPE STRAP

REAR MOUNTED, FLEXIBLE PIPE STRAP

This Markerlite accessory loops in the existing Markerlite rear mounting system to mount the Markerlite to cylinders and pipes from 20mm to 48mm in diameter.

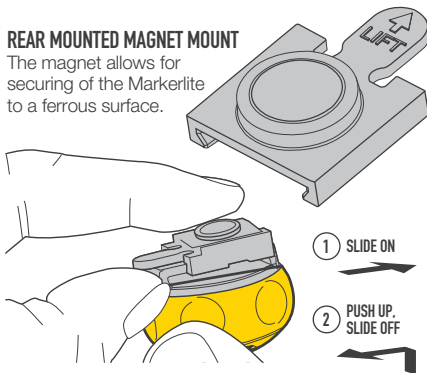
The strap can be used to mount the Markerlite to other construction sections such as box or right angle.



MAGNET MOUNT

REAR MOUNTED MAGNET MOUNT

The magnet allows for securing of the Markerlite to a ferrous surface.



Wolf

WOLF SAFETY LAMP COMPANY SAXON ROAD WORKS, SHEFFIELD S8 0YA, UK

T +44 114 255 1051 | F +44 114 255 7988
E INFO@WOLF-SAFETY.CO.UK | W WWW.WOLF-SAFETY.CO.UK

USE ONLY GENUINE WOLF ACCESSORIES AND PARTS
ML-607 Issue 01
DF473
Made in China

