



ATEX LIGHTING AND VENTILATION SOLUTIONS

FOR HAZARDOUS AREAS



PORTABLE LIGHTING

INSTALLED LIGHTING

TEMPORARY LIGHTING

TEMPORARY POWER

VENTILATION

TEMPORARY LIGHTING ACCESSORIES

With over 100 years' experience, the widest range available and an expert technical team always on hand to help, Wolf Safety is the ideal partner for all your Hazardous Area ATEX Portable, Temporary and Installed Lighting, Power Distribution and Ventilation requirements.

You can rely on Wolf for safety and performance in the world's most demanding workplaces, including:

- **The Oil and Gas Industry:** Maintenance, Repair and Operations (MRO), Tank Cleaning, Turnarounds and Shutdowns, Well Maintenance, Refinery Operations, Pipeline Maintenance, Drilling Operations, Floating Production Storage and Offloading (FPSO) Hook-ups and Operations
- **The Utilities Sector, including:**
Power Generation – Biomass and Gas Turbines
Gas Transmission Networks – Confined Spaces
Pipeline Maintenance and Road Works
Water and Wastewater Treatment
Sewage - Inspection, Maintenance, Cleaning, Repair
- **The Industrial Sector:** Petrochemical, Pharmaceutical, Agrichemical, Aviation, Food and Beverage industries
- **The Marine Industry:** Safety of Life at Sea (SOLAS), Bulk, Crude and Gas carriers
- **Emergency Services & Fire Fighting**
- **Military**



BRITISH DESIGN, INNOVATION AND MANUFACTURE SINCE 1912



ATEX PORTABLE LIGHTING

Our wide range of ATEX certified Portable Hazardous Area lighting for safe use in potentially explosive atmospheres worldwide, includes explosion protected handheld straight and right-angled torches, head torches and handlamps, including the renowned Wolfite Handlamp, with LED and bulb versions for use with either primary cell or rechargeable batteries and chargers.



HANDLAMPS INCLUDING:

WOLFLITE™ XT RECHARGEABLE LED HANDLAMP XT-50
GAS ZONES 1/2 DUST ZONES 21/22

WOLFLITE™ XT RECHARGEABLE LED HANDLAMP XT-70
GAS ZONES 1/2 DUST ZONES 21/22

WOLFLITE™ RECHARGEABLE LED HANDLAMP XT-75
GAS ZONES 0/1/2 DUST ZONES 21/22



TORCHES INCLUDING:

LED MINI TORCH
GAS ZONES 0/1/2 DUST ZONES 20/21/22

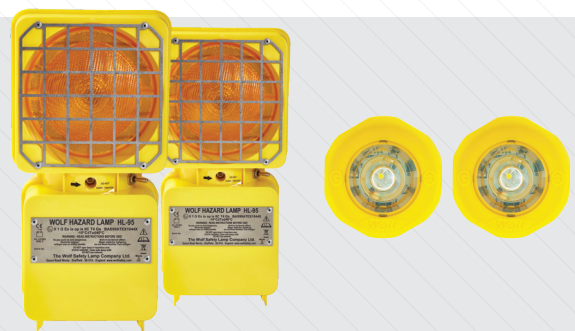
ATEX ZONE 0 COMPACT SAFETY LED TORCH TR-65 & TS-65
GAS ZONES 0/1/2 DUST ZONES 21/22



HEADTORCHES INCLUDING:

ATEX LED ZONE 0 HEADTORCH HT-400Z0
GAS ZONES 0/1/2 DUST ZONES 21/22

ATEX LED ZONE 0 HEADTORCH HT-650Z0
GAS ZONES 0/1/2 DUST ZONES 21/22



WARNING LIGHTS INCLUDING:

HAZARD LAMP HL-95
GAS ZONES 0/1/2

MARKERLITES
ML-15W WHITE
ML-15R RED
ML-15A AMBER
GAS ZONES 1/2 DUST ZONES 21/22

TEMPORARY LIGHTING

LINKEx™ TEMPORARY LUMINAIRES & FLOODLITES



LINKEx™ LX-400 LED
TEMPORARY LUMINAIRE

GAS ZONE: 1 AND 2
DUST ZONE: 21 AND 22
POWER SOURCE: LEAD

LV: 18-50V AC/DC
HV: 90-264V AC

SOVI™



LINKEx™ LX-400E LED
EMERGENCY TEMPORARY
LUMINAIRE

GAS ZONE: 1 AND 2
DUST ZONE: 21 AND 22
POWER SOURCE: LEAD &
EMERGENCY BATTERY

LV: 18-55V AC/DC
HV: 90-264V AC

SOVI™



LINKEx™ WF-300XL
LED FLOODLITE

GAS ZONE: 1 AND 2
DUST ZONE: 21 AND 22
POWER SOURCE: LEAD

LV: 18-50V AC/DC
HV: 90-264V AC/DC

SOVI™



LINKEx™ WF-250XL
LED FLOODLITE

GAS ZONE: 1 AND 2
DUST ZONE: 21 AND 22
POWER SOURCE: LEAD

LV: 18-50V AC/DC
HV: 90-264V AC/DC

SOVI™

LINKEx™ ATEX TANK LIGHTING KITS



LINKEx™ TANK LIGHTING KITS

GAS ZONE: 1 AND 2
DUST ZONE: 21 AND 22
POWER SOURCE: LEAD

110V OR 230V TO 24V



BRITISH DESIGN, INNOVATION AND MANUFACTURE SINCE 1912



SOVI™

SOVI™ (Safe Optimal Voltage Indicator) technology is a unique feature of our Temporary Lighting range. It ensures that your lighting solution is operating safely, effectively and at the optimal voltage level, and giving clear visual warning signals if it is not.

SOVI™ lights are certified and safe down to 0 volts.



ATEX LED HANDHELD LEADLAMP

ATEX TY-300 LED HANDHELD LEADLAMP

GAS ZONE: 1 AND 2
DUST ZONE: 21 AND 22

POWER SOURCE:
LEAD

88-140V AC
180-277V AC



ATEX AIRLAMP RANGE



Our world-famous and market-leading ATEX, IECEx and UKEX airlamp range has been updated for 2024, and is available now! Whilst using the same proven components and maintaining the excellent performance of the existing range, the A-TL44C and A-TL45C are:

- **Smaller**
- **Easier to maintain**
- **New, easy to fit seals**
- **Between 20% and 25% lighter**
(aluminium non-sparking grade construction)



ATEX TURBOLITE A-TL44C BAY LIGHT

GAS ZONE: 1 AND 2
DUST ZONE: 21 AND 22

POWER SOURCE: AIR
24V BULB



ATEX TURBOLITE A-TL45C FLOOD LIGHT

GAS ZONE: 1 AND 2
DUST ZONE: 21 AND 22

POWER SOURCE: AIR
24V BULB

RECHARGEABLE WORKLIGHTS

Wolf Rechargeable Worklights are ideal for Hazardous Area locations which lack a convenient power source and for tasks of a brief duration.



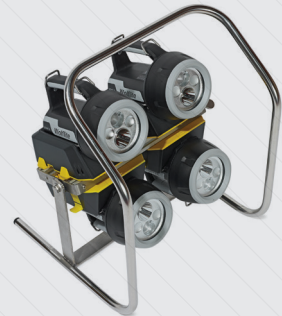
**ATEX LED MINI
WORKLITE™ WL-50**

**GAS ZONE: 1 AND 2
DUST ZONE: 21 AND 22
POWER SOURCE: RECHARGEABLE**



ATEX LED WORKLITE™

**GAS ZONE: 1 AND 2
DUST ZONE: 21 AND 22
POWER SOURCE: RECHARGEABLE**



ATEX ZONE 0 FLOOD BANKS

**GAS ZONE: 0, 1 AND 2
DUST ZONE: 21 AND 22
POWER SOURCE: RECHARGEABLE**

ATEX TEMPORARY POWER

With our range of ATEX certified Hazardous Area power distribution products, Wolf can provide everything you need to safely illuminate any Hazardous Area, no matter what the size.



TRANSFORMERS



SPLITTER BOXES



CABLE REELS



EXTENSION CABLES

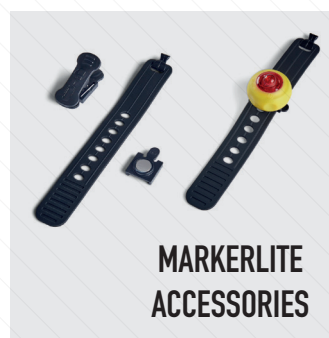


BRITISH DESIGN, INNOVATION AND MANUFACTURE SINCE 1912



ATEX LIGHTING ACCESSORIES

We offer a broad selection of accessories for charging, protecting, fixing and mounting our range of portable and temporary lighting.



VENTILATION

Wolf is the UK distributor of the Ramfan™ range of Hazardous Area ventilation fans, ducting and Venturi units. They are ATEX, IECEx and UKEX certified for safe use in Hazardous Areas, and are available in 115 or 230 volt options.



FANS / VENTILATORS

VF-UB20XX 20CM
GAS ZONES: 1/2 DUST ZONES: 21/22 0.33 HP (0.25KW)

VF-EF75XX 30CM
GAS ZONES: 1/2 DUST ZONES: 21/22 0.75 HP (0.56KW)

VF-EF150XX 40CM
GAS ZONES: 1/2 DUST ZONES: 21/22 1.5 HP (1.1KW)

VENTURI



- Available in 3 sizes
- Minimal maintenance - no moving parts
- Cylindrical mixing chamber delivers higher induction ratios

- Highly reliable
- Fixed standard API openings
- Tough and durable anti-static polymer housing

AREA LIGHTING

NEW!

We're proud to introduce two brand new ATEX, IECEx and UKEX certified lighting solutions in our new Area Lighting range for Hazardous Areas. The new WTL Towerlite™ is a high powered Area Light that illuminates medium to large sized areas from above. The WAL Wolf Area Light is compact, directional, and movable, with market leading light output.



WTL ATEX TOWERLITE™

**GAS ZONE: 1 AND 2
DUST ZONE: 21 AND 22
POWER SOURCE: LEAD**

88-140V AC 180-277V AC



WTL AREA LIGHT

**GAS ZONE: 1 AND 2
DUST ZONE: 21 AND 22
POWER SOURCE: LEAD**

88-140V AC 180-277V AC



BRITISH DESIGN, INNOVATION AND MANUFACTURE SINCE 1912



INSTALLED LIGHTING

Our extensive Hazardous Area lighting range now includes ATEX, IECEx and UKEX certified LED Installed lighting, consisting of:

- FFA (Forward Facing Array), DLO (Directional Linear Optics)
- Floodlights including Intelligent Emergency versions
- Highbays
- Bulkheads - including Intelligent Emergency versions



LHX Highbay

GAS ZONE: 1 AND 2
DUST ZONE: 21 AND 22

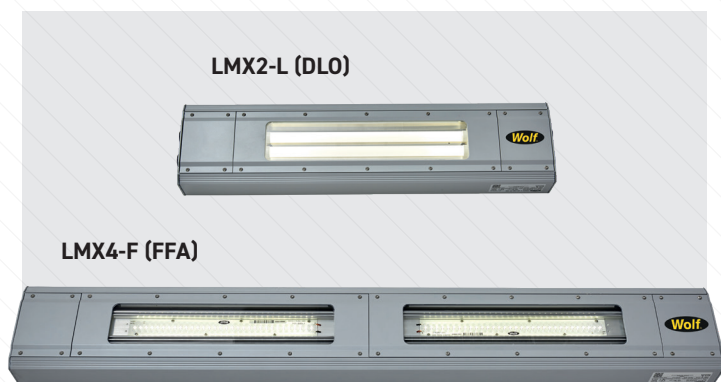
INPUT VOLTAGE RANGE:
88 - 140V AC
180 - 277V AC



LFX Floodlight

GAS ZONE: 1 AND 2
DUST ZONE: 21 AND 22

INPUT VOLTAGE RANGE:
88 - 140V AC
180 - 277V AC



LMX/E Linear

GAS ZONE: 1 AND 2
DUST ZONE: 21 AND 22
AVAILABLE IN DLO AND FFA
EMERGENCY AVAILABLE

INPUT VOLTAGE RANGE:
88-140V AC; 180 - 277V AC
100-140V AC; 200-277V AC
(EMERGENCY)



LBX/E Bulkhead

GAS ZONE: 1 AND 2
DUST ZONE: 21 AND 22
EMERGENCY AVAILABLE

INPUT VOLTAGE RANGE:
88-140V AC; 180 - 277V AC
100-140V AC; 200-277V AC
(EMERGENCY)

EX PIR AUTOMATIC ILLUMINATION SYSTEM

NEW!

The PIR-500 is an Ex motion detector unit designed and certified for safe use in Zone 1/21 Hazardous Areas. It uses a Passive Infrared Sensor (PIR) to monitor the Hazardous Area and control lighting, enhancing both safety and energy efficiency. The unit is both ATEX and IECEx certified.

The PIR-500 is available with three different lens versions for different area sizes: PIR-500/S for small areas (up to 9m radius), PIR-500/M for medium areas (up to 18m radius), and PIR-500/V for long-range detection (up to 22.5m), suitable for monitoring distant doorways and entrances.

- Save energy
- Reduce impact on the environment
- Reduce accidents
- Get instant illumination
- Increase LED life

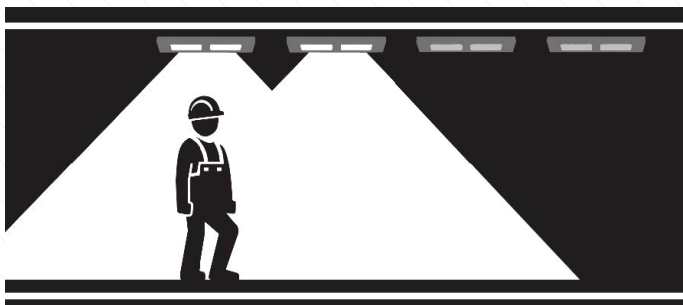
PIR-500

GAS ZONE: 1 AND 2
DUST ZONE: 21 AND 22
AC Input 110V to 230V



NEW!

Lights illuminate automatically when motion is detected.



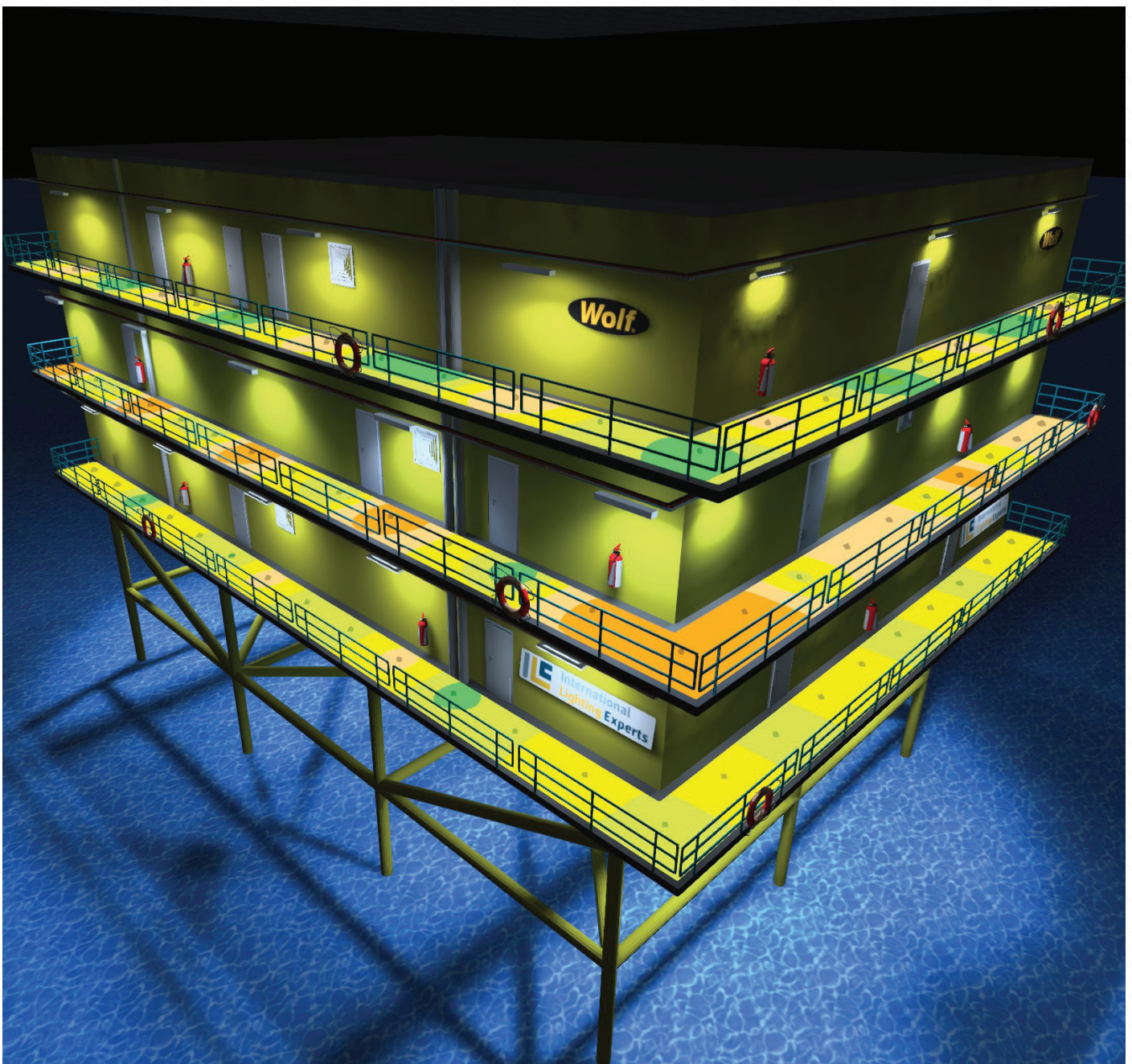
BRITISH DESIGN, INNOVATION AND MANUFACTURE SINCE 1912



LIGHTING DESIGN SERVICE

Wolf's specialist lighting design team can provide free detailed lighting plans that clearly illustrate the different, customised options we can offer to safely and efficiently illuminate your Hazardous Area.

We can simulate light levels of different options and combinations that Wolf products will produce for your site, using industry standard modelling and illuminance mapping software.





Wolf Safety Lamp Company

Saxon Road Works, Sheffield S8 0YA, UK

T: +44 114 255 1051

E: info@wolfsafety.com

www.wolfsafety.com

