



# ATEX LIGHTING AND VENTILATION SOLUTIONS

FOR HAZARDOUS AREAS



PORTABLE LIGHTING

INSTALLED LIGHTING

AREA LIGHTING

TEMPORARY POWER

VENTILATION

TEMPORARY LIGHTING

TEMPORARY LIGHTING ACCESSORIES

**With over 100 years' experience, the widest range available and an expert technical team always on hand to help, Wolf Safety is the ideal partner for all your Hazardous Area ATEX Portable, Temporary and Installed Lighting, Power Distribution and Ventilation requirements.**

**You can rely on Wolf for safety and performance in the world's most demanding workplaces, including:**

- **Oil and Gas:** including Maintenance, Repair and Operations (MRO), Tank Cleaning, Turnarounds and Shutdowns, Well Maintenance, Refinery Operations, Pipeline Maintenance, Drilling Operations, Floating Production Storage and Offloading (FPSO): Hook-ups and Operations
- **Power Generation:** including Natural Gas, Nuclear and Renewables (including Biomass)
- **Utilities:**  
Gas Transmission Networks, Confined Spaces, Pipeline Maintenance and Road Works, Water and Wastewater Treatment, Sewage - Inspeccion, Maintenance, Cleaning and Repair
- **Industry:** Petrochemical, Pharmaceutical, Agrichemical, Aviation, Food and Beverage industries
- **Marine:** Safety of Life at Sea (SOLAS), Bulk, Crude and Gas carriers
- **Emergency Services & Fire Fighting**
- **Military**



**BRITISH DESIGN, INNOVATION AND MANUFACTURE SINCE 1912**



# ATEX PORTABLE LIGHTING

Our wide range of ATEX certified LED Portable Hazardous Area lighting for safe use in potentially explosive atmospheres worldwide, includes explosion protected handheld straight and right-angled torches, head torches and handlamps, including the renowned Wolfite Handlamp, for use with either primary cell or rechargeable batteries and chargers.



## HANDLAMPS INCLUDING:

**WOLFLITE™ XT RECHARGEABLE LED HANDLAMP XT-50**  
GAS ZONES 1/2 DUST ZONES 21/22

**WOLFLITE™ XT RECHARGEABLE LED HANDLAMP XT-70**  
GAS ZONES 1/2 DUST ZONES 21/22

**WOLFLITE™ RECHARGEABLE LED HANDLAMP XT-75**  
GAS ZONES 0/1/2 DUST ZONES 21/22



## TORCHES INCLUDING:

**LED MINI TORCH**  
GAS ZONES 0/1/2 DUST ZONES 20/21/22

**ATEX ZONE 0 COMPACT SAFETY LED TORCH TR-65 & TS-65**  
GAS ZONES 0/1/2 DUST ZONES 21/22



## HEADTORCHES INCLUDING:

**ATEX ZONE 0 LED HEADTORCH HT-400Z0**  
GAS ZONES 0/1/2 DUST ZONES 21/22

**ATEX ZONE 0 LED HEADTORCH HT-650Z0**  
GAS ZONES 0/1/2 DUST ZONES 21/22



## WARNING LIGHTS INCLUDING:

**HAZARD LAMP HL-95**  
GAS ZONES 0/1/2

**MARKERLITES**  
ML-15W WHITE  
ML-15R RED  
ML-15A AMBER  
GAS ZONES 1/2 DUST ZONES 21/22

# ATEX TEMPORARY LIGHTING

## LINKEx™ TEMPORARY LUMINAIRES & FLOODLITES



**LINKEx™ LX-400 LED  
TEMPORARY LUMINAIRE**

GAS ZONE: 1 AND 2  
DUST ZONE: 21 AND 22  
POWER SOURCE: LEAD

LV: 18-50V AC/DC  
HV: 90-264V AC

SOVI™



**LINKEx™ LX-400E LED  
EMERGENCY TEMPORARY  
LUMINAIRE**

GAS ZONE: 1 AND 2  
DUST ZONE: 21 AND 22  
POWER SOURCE: LEAD &  
EMERGENCY BATTERY

LV: 18-55V AC/DC  
HV: 90-264V AC

SOVI™



**LINKEx™ WF-300XL  
LED FLOODLITE**

GAS ZONE: 1 AND 2  
DUST ZONE: 21 AND 22  
POWER SOURCE: LEAD

LV: 18-50V AC/DC  
HV: 90-264V AC/DC

SOVI™



**LINKEx™ WF-250XL  
LED FLOODLITE**

GAS ZONE: 1 AND 2  
DUST ZONE: 21 AND 22  
POWER SOURCE: LEAD

LV: 18-50V AC/DC  
HV: 90-264V AC/DC

SOVI™



BRITISH DESIGN, INNOVATION AND MANUFACTURE SINCE 1912



# LINKEx™ ATEX TANK LIGHTING KITS



## LINKEx™ TANK LIGHTING KITS

**GAS ZONE: 1 AND 2**  
**DUST ZONE: 21 AND 22**  
**POWER SOURCE: LEAD**  
**110V OR 230V TO 24V**



## SOVI™



SOVI™ (Safe Optimal Voltage Indicator) technology is a unique feature of our Temporary Lighting range. It ensures that your lighting solution is operating safely, effectively and at the optimal voltage level, and giving clear visual warning signals if it is not.

SOVI™ lights are certified and safe down to 0 volts.

## ATEX AIRLAMPS



Our world-famous and market-leading compressed air driven ATEX, IECEx and UKEX airlamp range has been updated for 2024, and is available now! Whilst using the same proven components and maintaining the excellent performance of the existing range, the A-TL44C and A-TL45C are:

- **Smaller**
- **Easier to maintain**
- **New, easy to fit seals**
- **Between 20% and 25% lighter**  
(aluminium non-sparking grade construction)



**NEW!**

**ATEX TURBOLITE A-TL44C  
BAY LIGHT**

**GAS ZONE: 1 AND 2**  
**DUST ZONE: 21 AND 22**

**POWER SOURCE: AIR**  
**24V BULB**



**NEW!**

**ATEX TURBOLITE A-TL45C  
FLOOD LIGHT**

**GAS ZONE: 1 AND 2**  
**DUST ZONE: 21 AND 22**

**POWER SOURCE: AIR**  
**24V BULB**



# PORTABLE ATEX LED INSPECTION LIGHT

**NEW!**

The TY-300 is a compact and lightweight, portable ATEX Zone 1/21 LED inspection lamp. It can be comfortably handheld for close-up inspection work, or suspended by the integrated swivel hooks for use as a temporary task light.



## ATEX TY-300 PORTABLE ATEX LED INSPECTION LIGHT

**GAS ZONE: 1 AND 2  
DUST ZONE: 21 AND 22**

**POWER SOURCE:  
LEAD**

**88-140V AC  
180-277V AC**

**NEW!**



- Up to 1390 lumens (emitted) light output
- Patented DLO (Directional Linear Optics) technology for low glare
- Available in two sizes: 640mms or 910mms
- 110V and 230V models available
- Compact and lightweight for close-up handheld inspection work
- Supplied with 2 integrated swivel hooks for hands-free task lighting
- Supplied with 10m of H07RN-F 3 core flexible 1.5mm<sup>2</sup> cable as standard
- Can be supplied with fitted ATX, CEAG, Marechal or Stahl Ex plugs
- Designed to permit users to easily change the cable
- Ex Certified replaceable anti-static film available to prevent damage from dirt, debris and paint

## LIGHT OUTPUT

**TY-300/18 - 1006 LUMENS  
TY-300/26 - 1390 LUMENS**

**PATENTED DLO (DIRECTIONAL  
LINEAR OPTICS) TECHNOLOGY  
FOR LOW GLARE**



**BRITISH DESIGN, INNOVATION AND MANUFACTURE SINCE 1912**



# ATEX RECHARGEABLE WORKLIGHTS

Wolf Rechargeable Worklights are ideal for Hazardous Area locations which lack a convenient power source and for tasks of a brief duration.



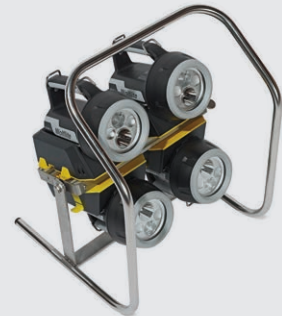
**ATEX LED MINI  
WORKLITE™ WL-50**

**GAS ZONE: 1 AND 2  
DUST ZONE: 21 AND 22  
POWER SOURCE: RECHARGEABLE**



**ATEX LED WORKLITE™**

**GAS ZONE: 1 AND 2  
DUST ZONE: 21 AND 22  
POWER SOURCE: RECHARGEABLE**



**ATEX ZONE 0 FLOOD BANKS**

**GAS ZONE: 0, 1 AND 2  
DUST ZONE: 21 AND 22  
POWER SOURCE: RECHARGEABLE**

# ATEX TEMPORARY POWER

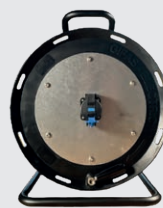
With our range of ATEX certified Hazardous Area power distribution products, Wolf can provide everything you need to safely illuminate any Hazardous Area, no matter what the size.



**TRANSFORMERS**



**SPLITTER BOXES**



**CABLE REELS**



**EXTENSION CABLES**

# ATEX LIGHTING ACCESSORIES

We offer a broad selection of accessories for charging, protecting, fixing and mounting our range of portable and temporary lighting.



# ATEX VENTILATION

Wolf is the UK distributor of the Ramfan™ range of Hazardous Area ventilation fans, ducting and Venturi units. They are ATEX, IECEx and UKEX certified for safe use in Hazardous Areas, and are available in 115 or 230 volt options.



## FANS / VENTILATORS

**VF-UB20XX** 20CM  
GAS ZONES: 1/2 DUST ZONES: 21/22 0.33 HP (0.25KW)

**VF-EFi75XX** 30CM  
GAS ZONES: 1/2 DUST ZONES: 21/22 0.75 HP (0.56KW)

**VF-EFi150XX** 40CM  
GAS ZONES: 1/2 DUST ZONES: 21/22 1.5 HP (1.1KW)

## VENTURI



- Available in 3 sizes
- Minimal maintenance - no moving parts
- Cylindrical mixing chamber delivers higher induction ratios

- Highly reliable
- Fixed standard API openings
- Tough and durable anti-static polymer housing



BRITISH DESIGN, INNOVATION AND MANUFACTURE SINCE 1912





# ATEX INSTALLED LIGHTING

Our extensive Hazardous Area lighting range now includes ATEX, IECEx and UKEX certified LED Installed lighting, consisting of:

- FFA (Forward Facing Array) or DLO (Directional Linear Optics)
- Floodlights - 4 different beam patterns available
- Highbays - 4 different beam patterns available
- Bulkheads - including Intelligent Emergency versions
- Linears - standard industry lengths and fittings for easy retrofit of existing installations



**LHX Highbay**

**GAS ZONE: 1 AND 2**  
**DUST ZONE: 21 AND 22**

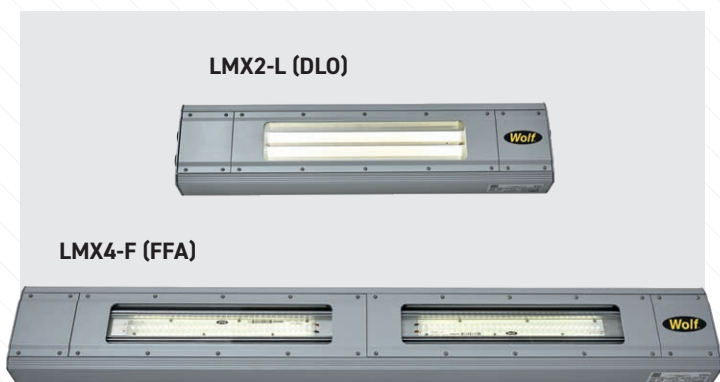
**INPUT VOLTAGE RANGE:**  
**88 - 140V AC**  
**180 - 277V AC**



**LFX FLOODLITE**

**GAS ZONE: 1 AND 2**  
**DUST ZONE: 21 AND 22**

**INPUT VOLTAGE RANGE:**  
**88 - 140V AC**  
**180 - 277V AC**



**LMX/E LINEAR**

**GAS ZONE: 1 AND 2**  
**DUST ZONE: 21 AND 22**  
**AVAILABLE IN DLO OR FFA**  
**EMERGENCY AVAILABLE**

**INPUT VOLTAGE RANGE:**  
**88-140V AC; 180 - 277V AC**  
**100-140V AC; 200-277V AC**  
**(EMERGENCY)**



**LBX/E BULKHEAD**

**GAS ZONE: 1 AND 2**  
**DUST ZONE: 21 AND 22**  
**AVAILABLE IN DLO**  
**EMERGENCY AVAILABLE**

**INPUT VOLTAGE RANGE:**  
**88-140V AC; 180 - 277V AC**  
**100-140V AC; 200-277V AC**  
**(EMERGENCY)**

# ATEX AREA LIGHTING

We're proud to introduce two brand new ATEX, IECEx and UKEX certified lighting solutions in our new Area Lighting range for Hazardous Areas. The new WTL Towerlite™ is a high powered, linkable Area Light that illuminates medium to large sized areas from above. The WAL Wolf Area Light is compact, directional, and movable, with market leading light output.



**NEW!**

**WAL AREA LIGHT**

**GAS ZONE: 1 AND 2  
DUST ZONE: 21 AND 22  
POWER SOURCE: LEAD**

**88-140V AC 180-277V AC**



**NEW!**

**WTL ATEX TOWERLITE™**

**GAS ZONE: 1 AND 2  
DUST ZONE: 21 AND 22  
POWER SOURCE: LEAD**

**88-140V AC 180-277V AC**



**NEW!**

# EX PIR AUTOMATIC ILLUMINATION SYSTEM

The PIR-500 is a Passive Infrared Sensor (PIR) motion detector that is both ATEX and IECEx approved for safe use in Zones 1,2 and 21,22 potentially explosive atmospheres. It is equipped with a 230V/16A rated dry contact, allowing it to control lighting installations and ancillary equipment to improve safety and boost energy efficiency.

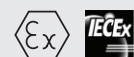
- Instant illumination
- Save energy
- Reduce accidents
- Reduce impact on the environment



**NEW!**

**PIR-500**

**GAS ZONE: 1 AND 2  
DUST ZONE: 21 AND 22  
AC Input 110V to 230V**



**BRITISH DESIGN, INNOVATION AND MANUFACTURE SINCE 1912**

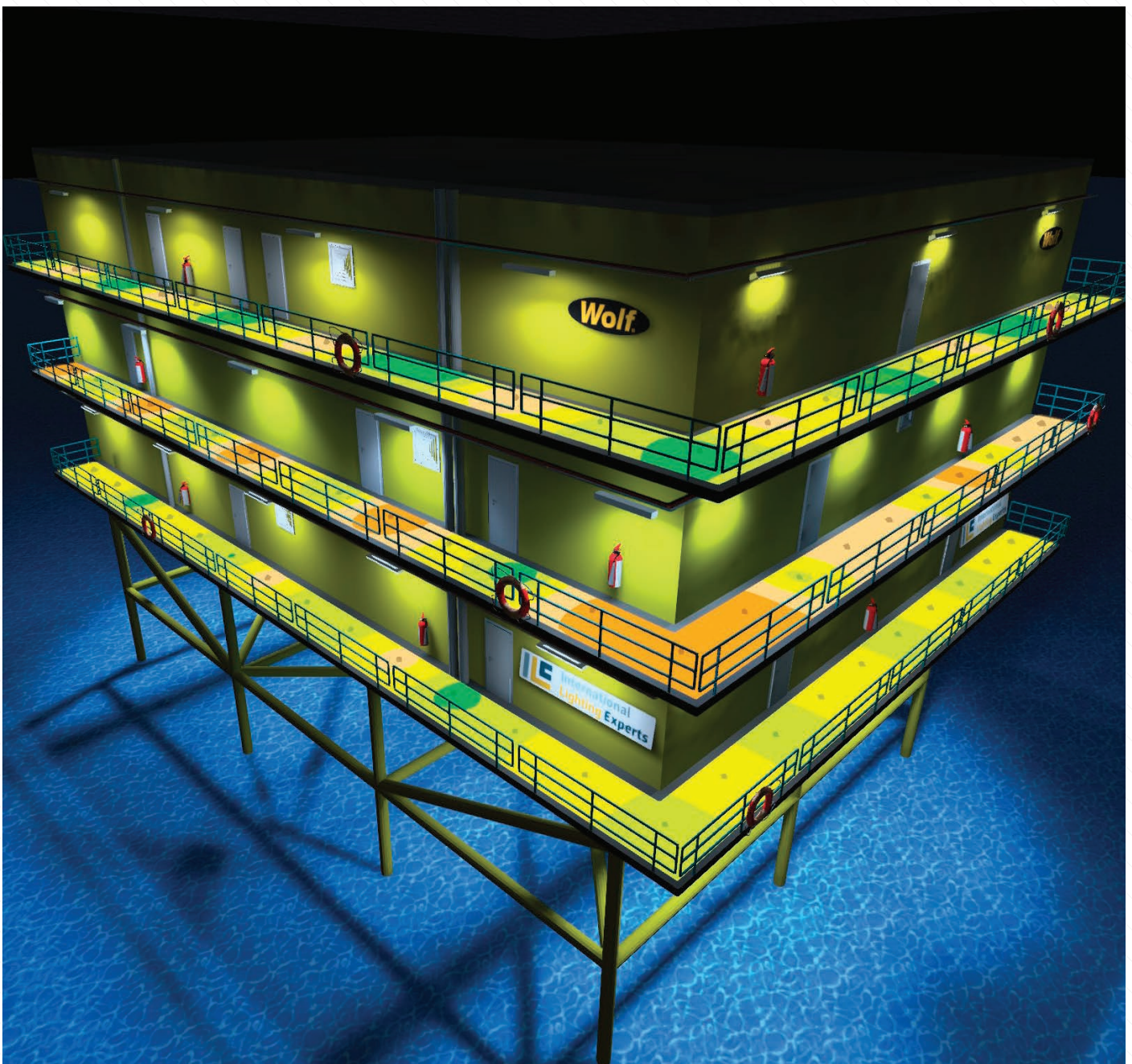




# LIGHTING DESIGN SERVICE

**Wolf's specialist lighting design team can provide free detailed lighting plans that clearly illustrate the different, customised options we can offer to safely and efficiently illuminate your Hazardous Area.**

We can simulate light levels of different options and combinations that Wolf products will produce for your site, using industry standard modelling and illuminance mapping software.





**Wolf Safety Lamp Company**

Saxon Road Works, Sheffield S8 0YA, UK

T: +44 114 255 1051

E: [info@wolfsafety.com](mailto:info@wolfsafety.com)

**[www.wolfsafety.com](http://www.wolfsafety.com)**



0598